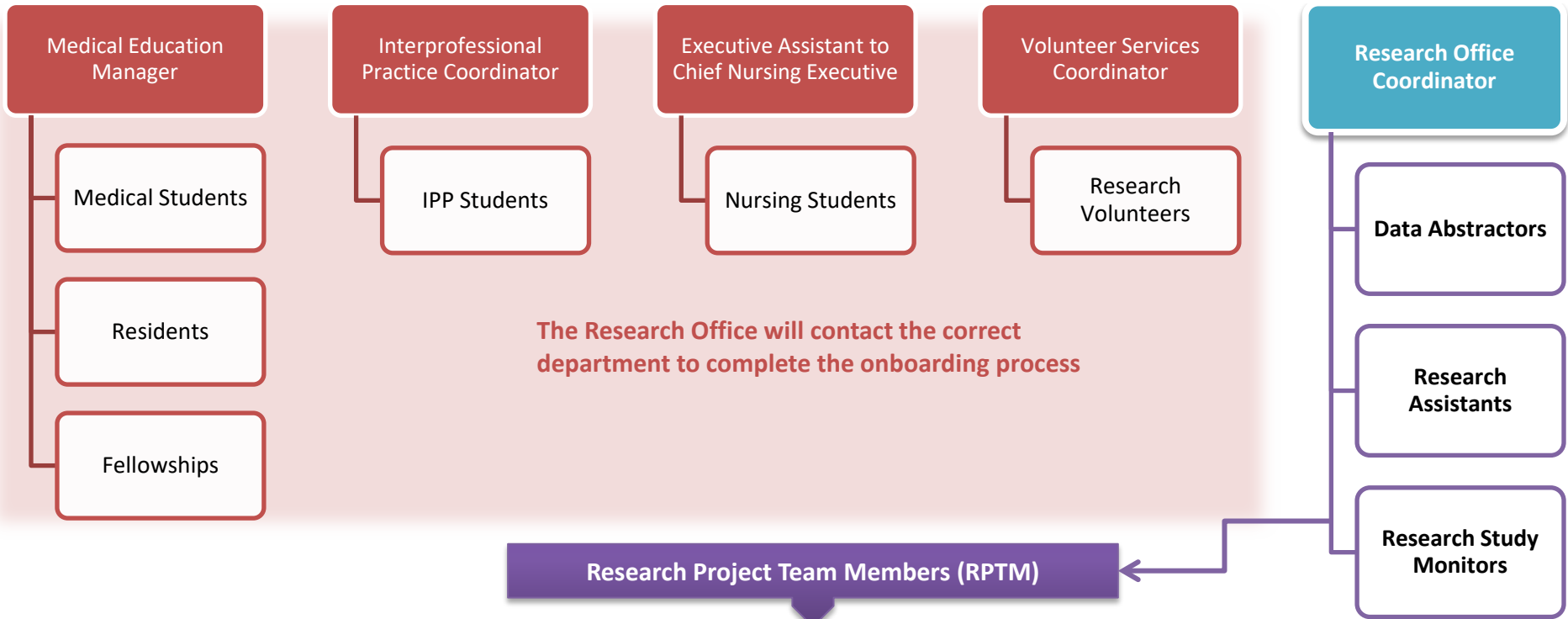


Onboarding department will be determined by the Research Office, see attached [Onboarding Process Map](#)

Onboarding department will be determined by the Research Office based on the RPTM's role



Research Project Team Members (RPTM)

Complete Onboarding form requirements as outlined on the onboarding form

Submit form and all documentation to the Research Office

SARF submitted to ITS

ID Badge issued (security office-J1)

PowerChart username & password sent by email (if required)

PowerChart training provided (if required)

RPTM Onboarded

