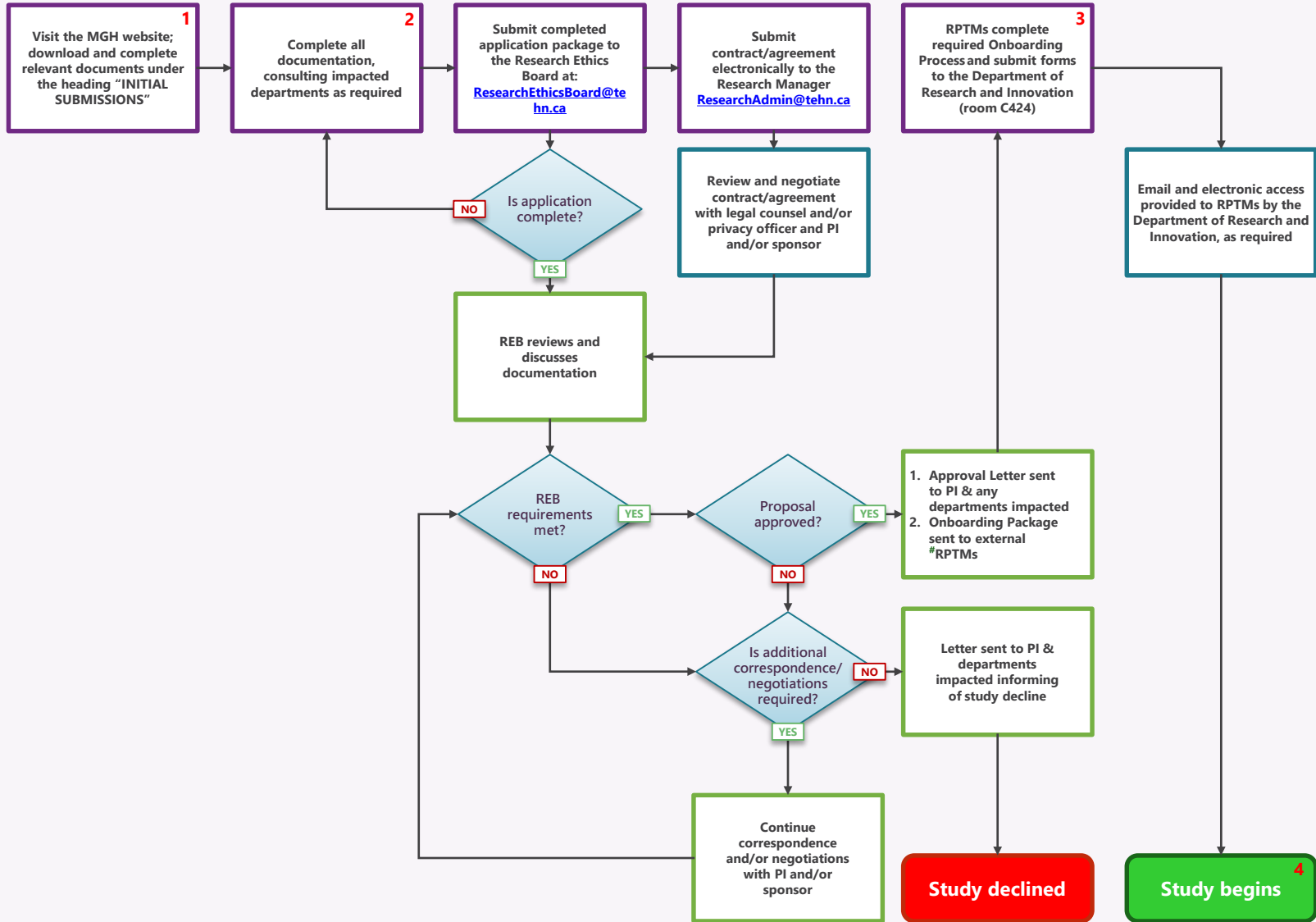


New Study Submission Process Map for Researchers

MGH Principal Investigator (PI)

Department of Research and Innovation

Research Ethics Board (REB)



Notes:
 1. MGH website (www.tehn.ca) → Education & Research → Research.
 2. Including TAHSN Research Application, Protocol, MGH Study Cost Estimate Forms (Impact Forms), etc. All resource costs/estimates and chart access are determined here. Instructions are included on the forms.
 3. Research Assistant Onboarding Process (See also Onboarding Process Map): RPTM Onboarding Form, Privacy Policy, Confidentiality Agreement, Orientation Module, Physicians Occupational Health and Safety Roles and Responsibilities.
 4. Project cannot begin until all contract/agreements are fully executed, if applicable. All REB approvals are granted for one year. A completed annual renewal/review form is required, one month prior to the expiry date, for annual re-approval to occur.